

## EMEF Newsletter

[View this email in your browser](#)



### Please Vote for Us!

Nationwide customers have nominated Epsom Medical Equipment Fund to feature in their Community Match scheme.

#### What is Community Match?

Community Match is Nationwide's in-branch local charity voting scheme. Each quarter, their branches feature three local charities or community organisations from customer nominations. Customers are then invited to vote for a winner. Our Fund will receive a £100 donation for being shortlisted to feature in the Community Match voting scheme. Should we receive the most votes at the end of the voting campaign we will then receive an additional £500.

#### What happens next?

From Tuesday 3 May, you'll notice a poster displayed in the Community Match stand in the following Nationwide branches: Addlestone, Epsom, Kingston-upon-Thames, Leatherhead, New Malden, Surbiton, Walton-On-Thames, Worcester Park

Voting will begin on 3 May 2016 and end on Thursday 30 June 2016. Please pop in to your local branch and vote for us.



### Round the Borough Bike Ride - Sunday 15th May

Enter now and support Epsom Medical Equipment Fund. We in turn will support you by purchasing medical equipment for Epsom General Hospital which could benefit you, your family or friends.

Learn more about your Borough, the Borough of Epsom & Ewell, enjoy the beauty, see wildlife as you cycle around the Borough on a 20 mile route by bike. Maps provided. Learn and see areas that you would not normally visit whilst helping Epsom Medical Equipment Fund by raising sponsorship money to help purchase medical equipment for Epsom General Hospital. There are two start

times, one at 9:30 a.m. for the cyclists who want to be competitive and 10 a.m. for those who want a more leisurely ride.

Entry is free for this event organised by Epsom & Ewell Borough Council but interested participants are asked to contact Bess Harding on 020 8337 8181 to help raise money for Epsom Medical Equipment Fund which will go towards the purchase of much needed medical equipment for Epsom General Hospital. Interested people should register their interest with Bess as soon as possible. Sponsorship forms, maps will be provided.



## Fund raising Dinner

There are only four tickets left for our Charity Fundraising Dinner at The Jolly Coopers. If interested please ring Bess Harding on 020 8337 8181 as soon as possible.

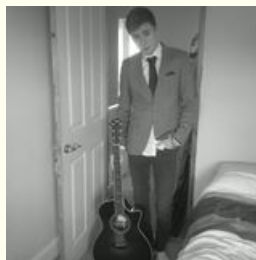


## Car Boot Sale

Our next Charity Car Boot Sale is on Sunday, 17<sup>th</sup> May. Booking is not necessary. Sellers were delighted with how much they sold at our last Car Boot Sale. With hard standing we are not placed in the position of having to cancel as with many grass venues. Keen buyers are finding some bargains and it is surprising what one sees going out of the entrance as visitors look at every table picking up many bargains as they walk round. Sellers are welcome from 7:30 a.m. whilst buyers should arrive after 9 a.m. Entrance for vehicles is £10 for a car, £12 for Vans, 4WD and MPV vehicles, larger vans are from £15. Buyers are asked to make a donation. These go towards the purchase of medical equipment. If you would like to lend a hand at our car boot, please contact Bess Harding on 020 8337 8181.

If you would like to organise a fund raising event or make a donation please let Bess know. Donations can take the form of making a donation through Givify or a regular donation by direct debit. Please contact Bess for further details. Help us help you.

We currently have a child's trampoline, a large bag of plastic balls which are put into an inflatable swimming pool, a bicycle suitable for a 5 year old -Hot Rod which will be offered for sale at our next Car Boot Sale. Also available are a selection of small lamps.



## Josh Bolt at the Wheatsheaf

Josh made a welcome return to The Wheatsheaf in Ewell on Saturday night. The pub was packed spilling over into the garden on such a lovely evening eagerly waiting for his performance to begin.

A raffle was run to raise money for Epsom Medical Equipment Fund which was well supported by those attending raising nearly £80 which will go towards the purchase of ultrasound apparatus for Epsom General Hospital. Watch out for his next visit as you will enjoy his singing.

A huge thank you to everyone for their generosity

Thanks for reading,  
Bess

*Copyright © 2016 Epsom Medical Equipment Fund, All rights reserved.*

[unsubscribe from this list](#)

[update subscription preferences](#)

MailChimp