

THE FAIRY TALE FAIR

Craft & Design Fair

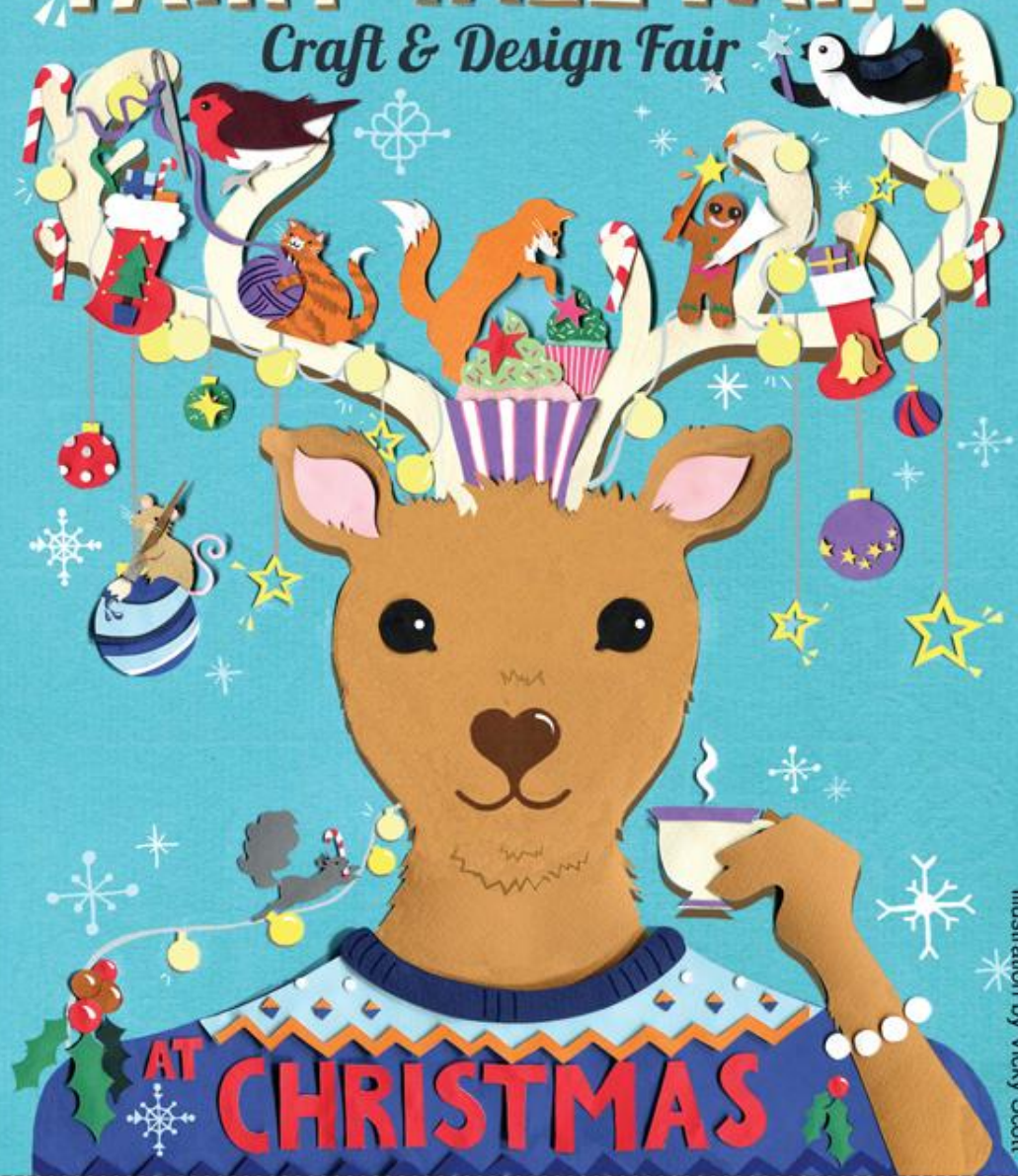


Illustration by Vicky Scott

AT CHRISTMAS

Saturday 19th November, Patcham Methodist
 Ladies Mile Road, Patcham, Brighton, BN1 8TA, 10.30 - 3.30
 Find us next to the Ladies Mile shops, opp. Patcham High

Find out more: www.thefairytalefair.co.uk



Face
Painting

Unique
Gifts &
Makes

Craft
Workshops
for all ages

Magical
Festive
Tearoom

Support
Local Makers
& Designers

Over 40
stalls



*Festive Gifts | Jewellery | Cards | Art
 Cosmetics | Prints | Decorations | Stationery | Home
 Kids & Baby gifts | Cakes & Chocolates | Stocking Fillers*

Patcham Silver Youth Band perform outside at 12.30pm

Free parking | 5/5A Bus route | Free entry | #thefairytalefair

Also join us on November 13th & December 11th at Brighton Open Market
 & December 4th at The Charmandean, Worthing in aid of St Barnabas.

Kindly sponsored by these lovely lot: thebestofbrightonandhove

Print crafted by
printed.com



**Spencer
& Leigh**
SALES & LETTINGS

Patcham
Slimming
-WORLD-
touching hearts, changing lives