

RUGBY
Art Gallery
& Museum

A WORLD OF
FIRE
& **ICE**

BY GINA GLOVER
GEOF RAYNER & JESSICA RAYNER

14 September -
16 November

A World of Fire and Ice uses the power of visual imagery to focus our attention on our energy use and industrial intrusions into wild nature.

A WORLD OF **FIRE** & **ICE**

EVENTS

EXHIBITION PREVIEW

Friday 13 September, 5.30 - 7.30pm

Join us for the launch of our latest exhibition in the company of artist, Gina Glover.

MEET THE ARTIST & ARTIST TALK

Saturday 5 October, 11am - 3pm

Meet the artist 11am - 1pm

Artist Talk 2 - 3pm (bookable £3, under 18s free)

Meet the artist behind the exhibition, Gina Glover, and gain unique insights into her creative process. She will be sharing her inspiration and the stories behind the artwork before heading into the exhibition for a tour.

PORTFOLIO REVIEW

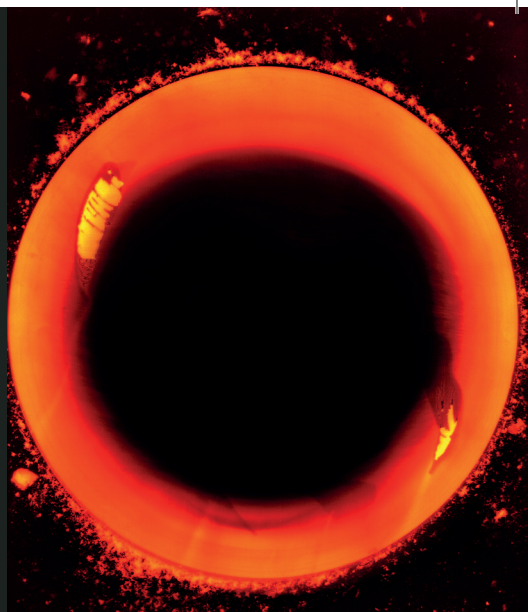
Saturday 19 October, 11am - 3pm

Are you a photographer or artist looking for expert feedback? Join us for a dedicated drop-in session where you can showcase your work to artist Gina Glover and Geof Rayner. Whether you're a seasoned professional or just starting out, this is a fantastic opportunity to gain valuable insights and enhance your creative practice.

Drop-in

To book on any of these events, please visit our website www.ragm.co.uk

or call the visitors centre on
01788 533217



CLOSING PARTY

Saturday 9 November, 1pm - 4pm

Enjoy one last chance to immerse yourself in the captivating exhibition, A World of Fire and Ice. Meet the artist, Gina Glover and mingle with fellow art enthusiasts.

IN CONVERSATION WITH TOM HEAP

Saturday 9 November, 4.30 - 5.30pm

Arrival Drinks reception 4 - 4.30pm

Join us for a panel discussion on climate change inspired by the exhibition. BBC Broadcaster, author, and journalist Tom Heap, known for his work on Countryfile, The Climate Show, and 50 Ways To Save The Planet, will be joined by Gina Glover and Geof Rayner for a thought-provoking conversation.

Bookable, £3, under 18's free

